

## Are you passionate about the intersection of neuroscience and engineering?

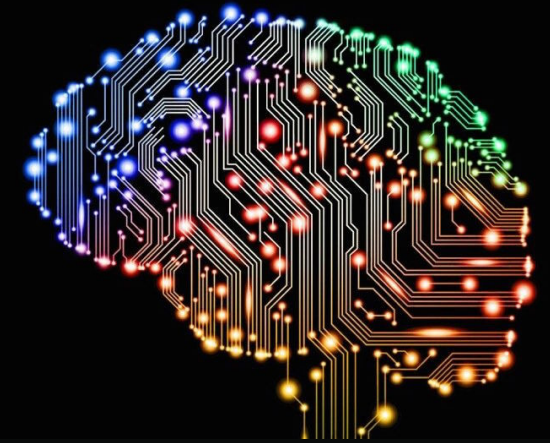
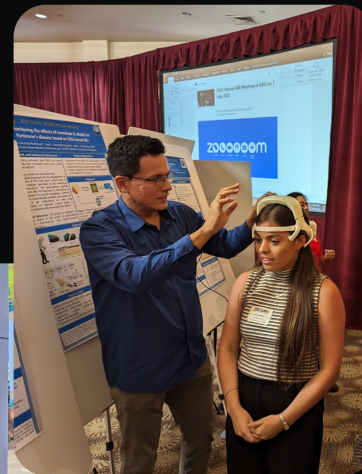
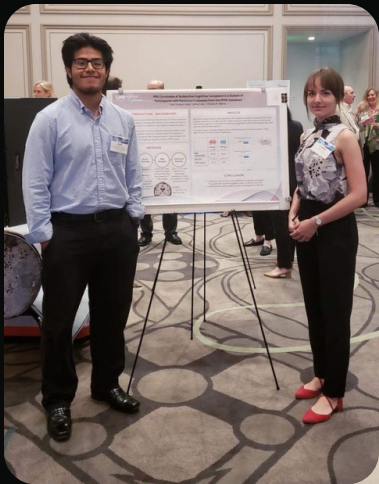
This multidisciplinary program combines the expertise of our renowned faculty, advanced research facilities, and a vibrant academic community to equip our students with the skills they need to shape the future of neuroscience.

## What is Neuroengineering?

Neuroengineering integrates advanced topics in neurophysiology, neural dynamics, neuropathology, systems engineering, computational analysis, advanced imaging, and data analysis. Our program combines faculty expertise in neurobiology, neuroscience, engineering, and other sciences to train the next generation of neuroengineers, ready to advance our understanding of neurodegenerative disorders and other brain diseases.

## Are you our next Neuroengineer?

We're looking for motivated candidates with a background in engineering, computer science, neuroscience, or a related field. If you have a solid foundation in quantitative skills, a passion for understanding the brain, and a desire to apply this knowledge to solve real-world problems, you might be our next Neuroengineer.



## Who Can Apply?

Applicants must have a bachelor's degree from an ABET-accredited institution (or equivalent) in engineering or a related field with strong computational components. Students with degrees in computer science, neuroscience, physical sciences, life sciences, or mathematics will be considered, provided they demonstrate preparation for the neuroengineering graduate curriculum.

Admission to the NE PhD program is competitive. Applicants will typically have a GPA of 3.0 on a 4.0 scale or greater from their previous degree(s) and significant experience in engineering, neuroscience, or a closely-related field.

[www.uab.edu/engineering/  
home/neuroengineering](http://www.uab.edu/engineering/home/neuroengineering)

Applications for Fall are now open! Shape the future of brain science. Embark on your Neuroengineering journey with UAB today!

## Application Deadlines

Students are admitted in the fall semester each year. Applications must be submitted through the Graduate School online portal. The application fee will be waived for domestic applicants who submit a complete application by the priority deadline. Preference for admission will be given to earlier applicants.

- No GRE scores required
- No Master's degree required
- English proficiency required for international applicants

Priority deadline: December 15, 2023  
Final deadline: February 1, 2024

*Applications must be marked "complete" in the application portal by the priority deadline in order for the application fee to be waived.*

[Application Portal](https://cloud/reach.uab.edu/graduate-application)

<https://cloud/reach.uab.edu/graduate-application>

## Program Leadership



**Jamie Tyler, Co-Director**  
Professor  
Biomedical Engineering  
wjpt@uab.edu



**Mark Bolding, Co-Director**  
Associate Professor  
Radiology  
mbolding@uab.edu



**Kristy Barlow**  
Dir of Academic Programs  
Engineering Dean's Office  
kbarlow@uab.edu



University of Alabama at Birmingham  
School of Engineering  
Hoehn Engineering Building, Suite 101  
1075 13<sup>th</sup> Street South  
Birmingham, AL 35294-4440  
neuroeng@uab.edu

unlock the future of brain science with a  
**Neuroengineering PhD**  
at the University of Alabama at Birmingham

**UAB** THE UNIVERSITY OF ALABAMA AT BIRMINGHAM.

School of  
Engineering

Heersink School  
of Medicine